

# Urban kiwiRAP and IRR Innovation across New Zealand



Fergus Tate -National Traffic and Safety Manager  
New Zealand Transport Agency

iRAP Innovation Workshop 2015, London, 15-16 September

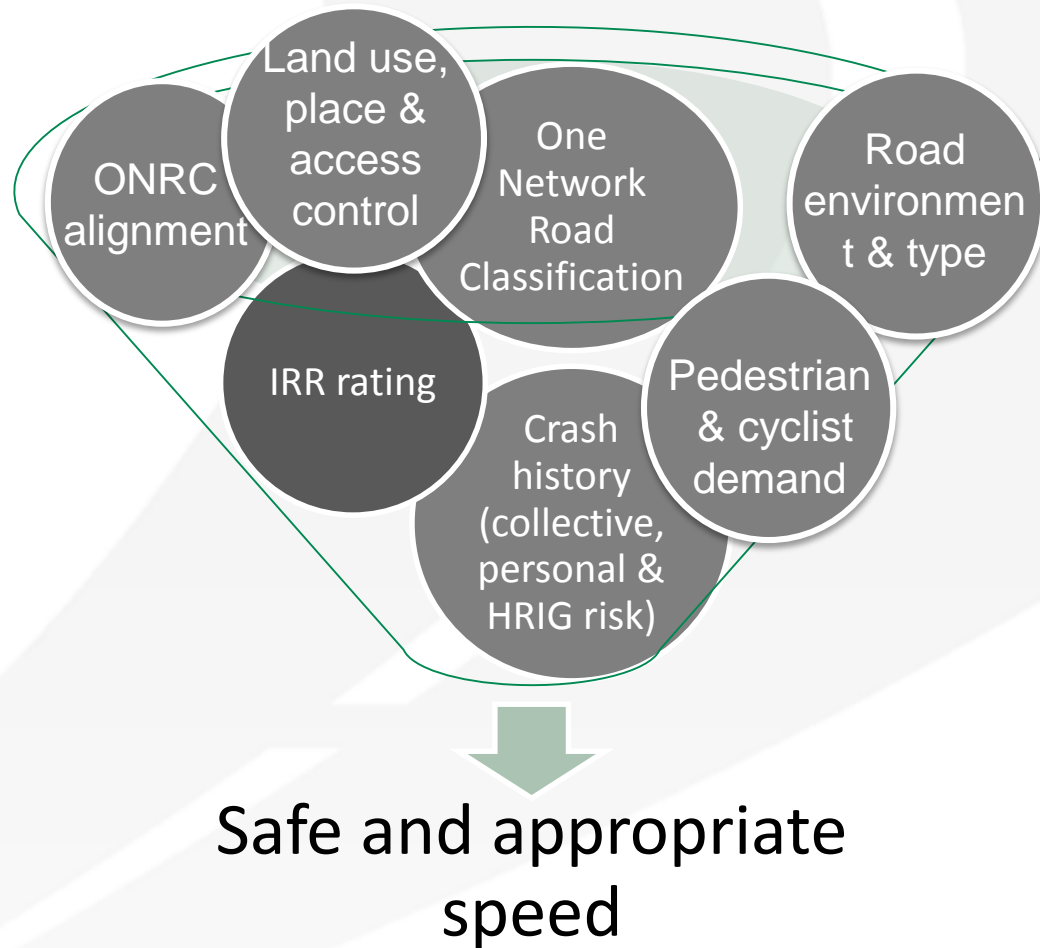


# Infrastructure Risk Rating (IRR) is...

- A simplified risk based road assessment methodology
- Like star rating but with:
  - Fewer features (9)
  - Rated over homogenous lengths
  - Uses available imagery

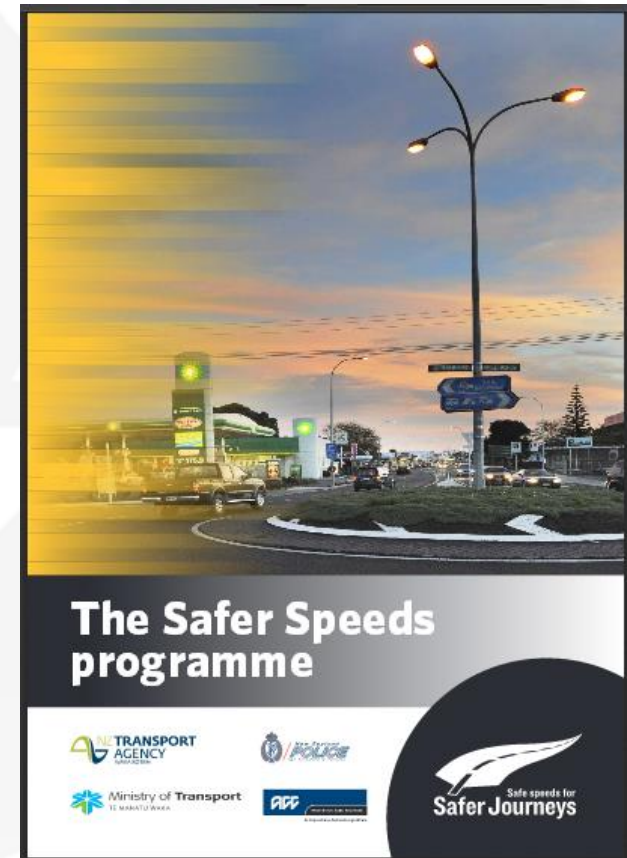


# Developed to support the NZ *Safer Speeds Programme*



# Why IRR

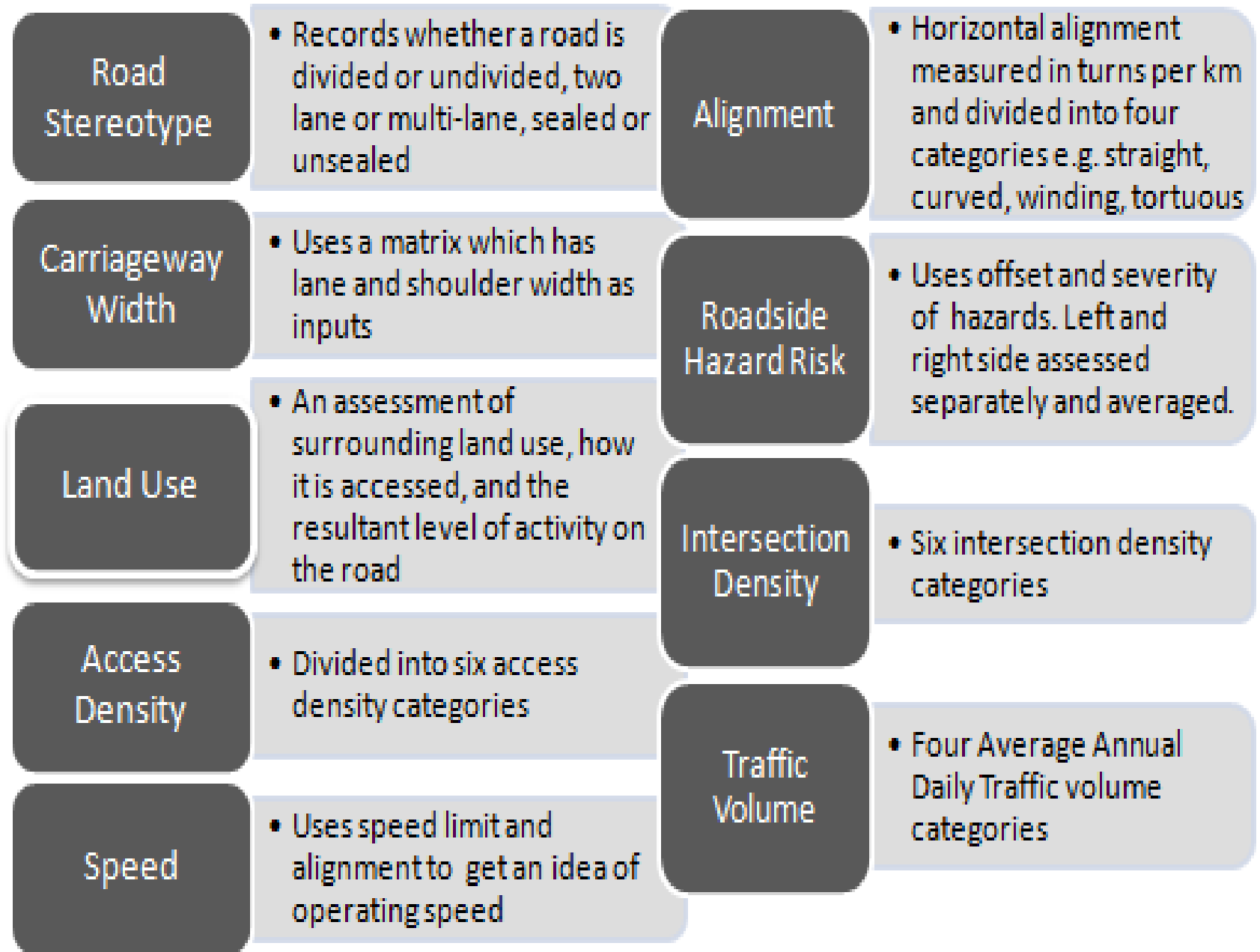
- Developing a *Safer Speeds Programme*
- The right speed for the right road
- Road infrastructure risk is a key determinant in the safe and appropriate speed of a road

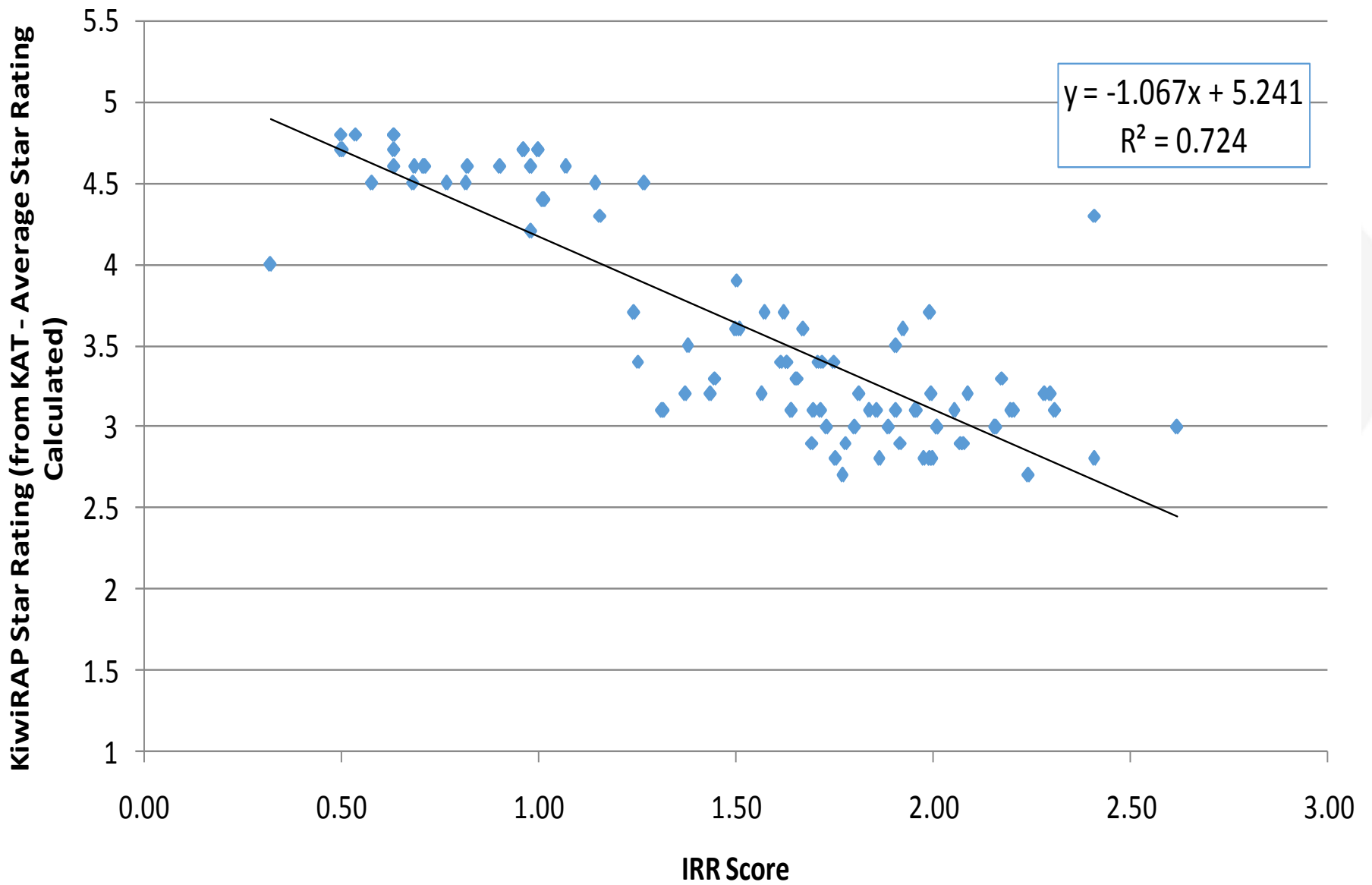


# Why IRR (2)

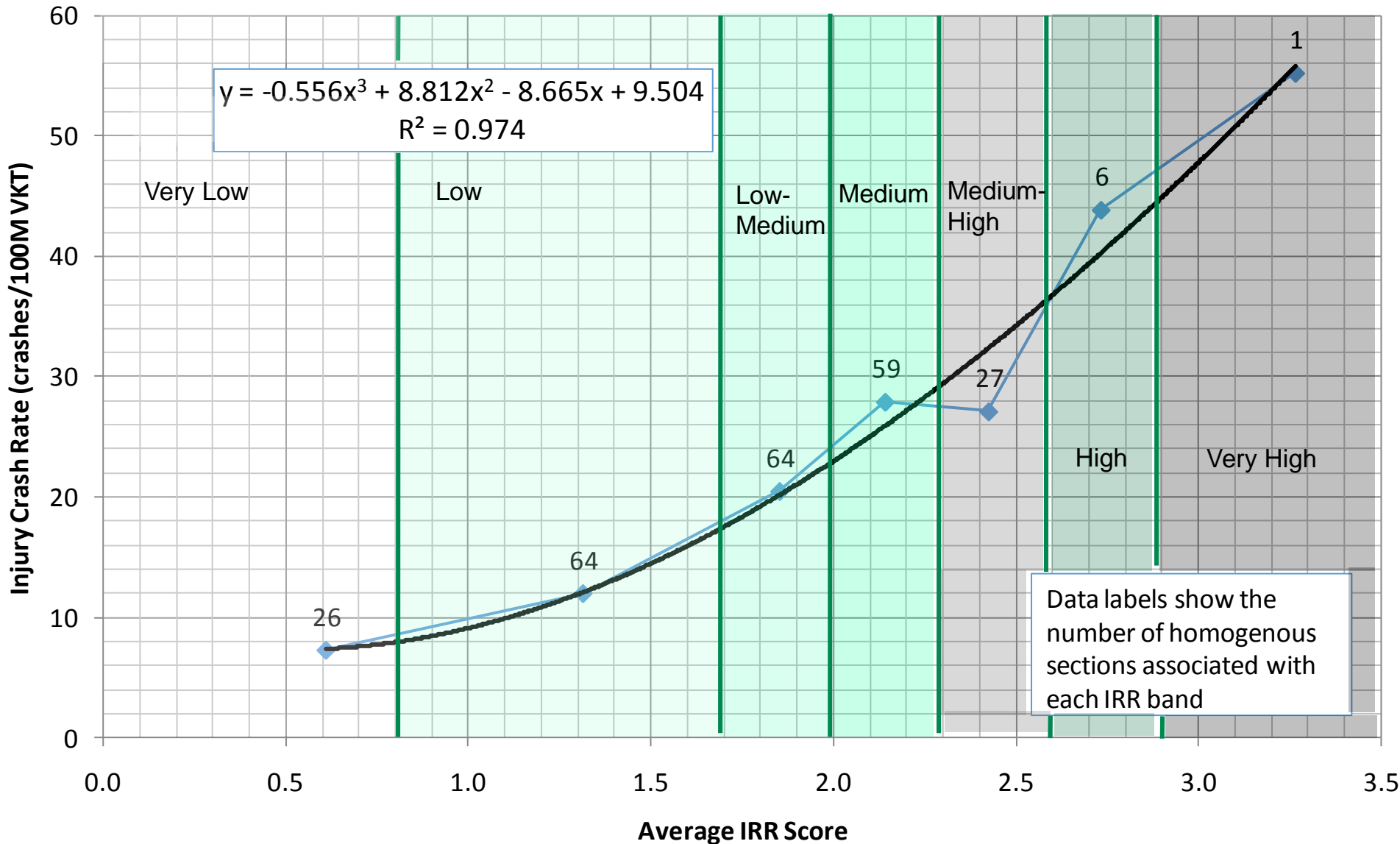
- Could use star rating but:
  - 94,000km of road for <5 million people
  - Only ~14,250km or 15% will be star rated
  - Star rating the whole network in NZ is unaffordable







# IRR is a good predictor of risk





# IRR and the Speed Management Framework

IRR Score	IRR Rating	IRR Rating Interpretation (Compatibility with Speed Management Framework & Urgency of Speed Management Review)	
		Rural (80+km/h)*	Urban (≤70km/h)*
0 to <0.8	1 – Very Low	Safe speed No change	Safe speed No change
0.8 to <1.7	2 - Low	Compatible speed No change	Safe speed No change
1.7 to <2.0	3 - Low-medium	Appropriate speed Low urgency	Compatible speed No change
2.0 to <2.3	4 - Medium	Incompatible speed Moderate urgency	Appropriate speed Low urgency
2.3 to <2.6	5 - Medium-high	Unsafe speed High urgency	Incompatible speed Moderate urgency
2.6 to <2.9	6 - High	Unsafe speed High urgency	Unsafe speed High urgency
2.9+	7 – Very High	Unsafe speed High urgency	Unsafe speed High urgency